

Neurophysical Modeling of Brain Dynamics

PA Robinson^{*,1,2}, CJ Rennie^{1,2,3}, DL Rowe^{1,2}, SC O'Connor^{1,2}, JJ Wright^{2,4}, E Gordon^{2,5} and RW Whitehouse^{1,2}

¹School of Physics, University of Sydney, Australia; ²Brain Dynamics Center, Westmead Hospital and University of Sydney, Westmead, Australia;

³Department of Medical Physics, Westmead Hospital, Westmead, Australia; ⁴Liggins Institute, University of Auckland, Auckland, New Zealand;

⁵Department of Psychological Medicine, Westmead Hospital and University of Sydney, Westmead, Australia

A recent neurophysical model of brain electrical activity is outlined and applied to EEG phenomena. It incorporates single-neuron physiology and the large-scale anatomy of corticocortical and corticothalamic pathways, including synaptic strengths, dendritic propagation, nonlinear firing responses, and axonal conduction. Small perturbations from steady states account for observed EEGs as functions of arousal. Evoked response potentials (ERPs), correlation, and coherence functions are also reproduced. Feedback via thalamic nuclei is critical in determining the forms of these quantities, the transition between sleep and waking, and stability against seizures. Many disorders correspond to significant changes in EEGs, which can potentially be quantified in terms of the underlying physiology using this theory. In the nonlinear regime, limit cycles are often seen, including a regime in which they have the characteristic petit mal 3 Hz spike-and-wave form.

Neuropsychopharmacology (2003) **28**, S74–S79. doi:10.1038/sj.npp.1300143

Keywords: brain dynamics; EEG; biophysics; modeling

INTRODUCTION

Correlations of EEGs with brain function are widely used diagnostically, and close connections to dynamics, cognition, and mental disorders are inferred (Niedermeyer and Lopes da Silva, 1999). Yet the detailed link between EEGs and the underlying physiology is not well understood, despite over 125 years' work (Niedermeyer and Lopes da Silva, 1999). Similar remarks apply to evoked response potentials (ERPs). Still more cryptic are EEGs seen in disorders, including epilepsy, whose relation to normal EEGs is not understood. As a result EEG studies are not integrated within any overall framework, nor with other branches of neuroscience.

EEGs result from cortical electrical activity aggregated over scales much larger than individual neurons or that can be modeled using neural networks. Hence, in one class of models averages are taken over microscopic neural structure to obtain continuum descriptions on scales of millimeters to the whole brain, incorporating realistic anatomy of separate excitatory and inhibitory neural populations (pyramidal cells and interneurons), nonlinear neural responses, multiscale interconnections, dendritic, cell-body and axonal dynamics, and corticothalamic feedback (Wilson and Cowan, 1973; Lopes da Silva *et al.*, 1974; Nunez, 1974, 1995; Freeman, 1975; Steriade *et al.*, 1990;

Wright and Liley, 1996; Jirsa and Haken, 1996; Robinson *et al.*, 1997, 2001, 2002; Rennie *et al.*, 2002).

We have developed a physiologically based continuum model of corticothalamic dynamics that reproduces and unifies many features of EEGs, including the discrete spectral peaks in the slow wave, 'delta', 'theta', 'alpha', and 'beta' bands, seen in waking and sleeping states (Robinson *et al.*, 2001, 2002), ERPs (Rennie *et al.*, 2002), measures of coherence (Robinson, 2003), generalized epilepsies, EEG entrainment and seizure activation by stimuli (Robinson *et al.*, 2002), and low-dimensional seizure dynamics (Robinson *et al.*, 2002). Many behaviors were derived from moderate parameter changes of a few mechanisms in a single model, thereby enabling classification of different states using these parameters. Our approach averages over microstructure to yield mean-field equations in a way that complements cellular-level and neural-network analyses: these other approaches can be employed to elucidate the connections between microstructure and mean-field quantities, while the large-scale fields provide the background against which microscopic neural activity takes place. In the following sections we outline our model and its main results to date.

METHOD

Corticothalamic Model

The details of the model have been published elsewhere (Robinson *et al.*, 2002); owing to space limitations, we restrict ourselves here to a brief outline.

*Correspondence: Dr PA Robinson, School of Physics, University of Sydney, NSW 2006, Australia, Fax: +61 2 9351 7726, E-mail: p.robinson@physics.usyd.edu.au

Received 01 September 2002; revised 03 November 2002; accepted 03 December 2002

The first feature incorporated is the neural response to the cell-body potential. Mean firing rates Q_a of excitatory ($a=e$) and inhibitory ($a=i$) neurons are nonlinearly related to mean potentials V_a by $Q_a(\mathbf{r}, t) = \Sigma[V_a(\mathbf{r}, t)]$, where Σ is a sigmoidal function that increases from 0 to Q as V_a increases from $-\infty$ to $+\infty$. We use

$$\Sigma[V_a(\mathbf{r}, t)] = Q[1 + \exp\{-[V_a(\mathbf{r}, t) - \theta]/\sigma'\}]^{-1}, \quad (1)$$

where θ is the mean neural firing threshold and $\sigma'\pi/\sqrt{3}$ is its standard deviation.

The potential V_a results after dendritic inputs have been filtered and smeared out in time while passing through the dendritic tree, then summed. It obeys a differential equation (Robinson *et al*, 1997, 2001)

$$D_\alpha V_a(\mathbf{r}, t) = v_{ae}\phi_e(\mathbf{r}, t) + v_{ai}\phi_i(\mathbf{r}, t) + v_{as}\phi_s(\mathbf{r}, t - t_0/2), \quad (2)$$

$$D_\alpha = \frac{1}{\alpha\beta} \frac{d^2}{dt^2} + \left(\frac{1}{\alpha} + \frac{1}{\beta}\right) \frac{d}{dt} + 1, \quad (3)$$

where β and α are the inverse rise and decay times of the cell-body potential produced by an impulse at a dendritic synapse and $\beta \approx 4\alpha$. The right-hand side of (2) involves contributions from ϕ_{ei} , from other cortical neurons, and inputs ϕ_s from thalamic relay nuclei, delayed by a time $t_0/2$ required for signals to propagate from thalamus to cortex. In (2) $v_{ab} = N_{ab}s_b$, where N_{ab} is the mean number of synapses from neurons of type $b = e, i, s$ to type $a = e, i$ and s_b is the strength of the response to a unit signal from neurons of type b .

Each part of the corticothalamic system produces a field ϕ_a of pulses that travels at $v = 10 \text{ m s}^{-1}$ and obeys a damped wave equation (Robinson *et al*, 1997, 2001):

$$\left(\frac{1}{\gamma_a^2} \frac{d^2}{dt^2} + \frac{2}{\gamma_a} \frac{d}{dt} + 1 - r_a^2 \nabla^2\right) \phi_a(r, t) = \Sigma[V_a(r, t)], \quad (4)$$

where $\gamma_a = v/r_a$ and r_a is the mean range of axons a . If intracortical connectivities are proportional to the numbers of synapses involved, $V_i = V_e$ and $Q_i = Q_e$ (Wright and Liley, 1996; Robinson *et al*, 2001), which let us concentrate on excitatory quantities. The smallness of r_i also lets us set $\gamma_i \approx \infty$ (Robinson *et al*, 1997).

The model incorporates corticothalamic connectivities and thalamic nonlinearities. Figure 1 shows the connectivities considered, including the thalamic reticular nucleus that inhibits relay nuclei. The latter relay external stimuli ϕ_n to the cortex as well as corticothalamic feedback. The cell-body potentials then satisfy

$$D_\alpha V_c(\mathbf{r}, t) = v_{ce}\phi_e(\mathbf{r}, t - t_0/2) + v_{cs}\phi_s(\mathbf{r}, t) + v_{cr}\phi_r(\mathbf{r}, t) + v_{cn}\phi_n(\mathbf{r}, t), \quad (5)$$

where there is a delay $t_0/2$ for signals to travel from cortex to thalamus, $c = r, s$, $v_{cc} = v_{rn} = 0$, and $\phi_c(\mathbf{r}, t) = \Sigma[V_c(\mathbf{r}, t)]$ (Robinson *et al*, 2001) applies because the small size of the thalamic nuclei enables us to assume $\gamma_c \approx \infty$ and $r_c \approx 0$ in (4).

Our model has 15 parameters: Q , θ , σ' , α , β , γ_e , t_0 , v_{ee} , v_{ei} , v_{es} , v_{se} , v_{sr} , $v_{sn}\phi_n$, v_{re} , and v_{rs} , enough to allow realistic representation of the anatomy and physiology, but few enough to yield useful interpretations. The parameters are approximately known from the experiment (Robinson *et al*, 2001, 2002), leading to the nominal values in Table 1, which

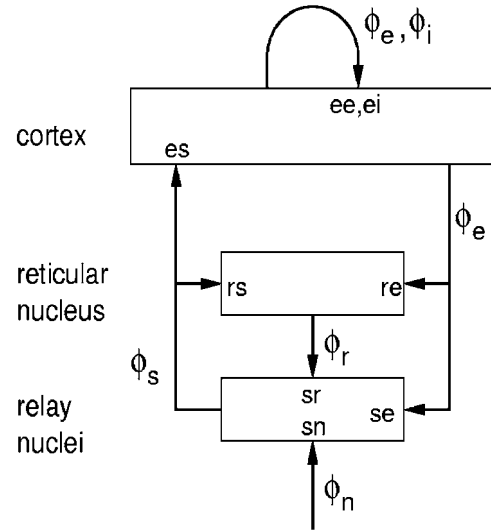


Figure 1 Schematic of corticothalamic interactions, showing the locations ab at which v_{ab} and G_{ab} act.

Table 1 Nominal Parameters from Robinson *et al* (2002)

Quantity	Nominal	Unit
Q	250	s^{-1}
θ	15	mV
σ'	3.3	mV
γ_e	100	s^{-1}
$\alpha = \beta/4$	50	s^{-1}
t_0	80	ms
v_{ee}, v_{es}, v_{se}	1.2	mVs
$-v_{ei}$	1.8	mVs
$-v_{sr}$	0.8	mVs
$v_{sn}\phi_n$	1.0	mVs
v_{re}	0.4	mVs
v_{rs}	0.2	mVs

are indicative only—some vary severalfold between individuals, arousal states, and disorders. We use only values compatible with physiology.

RESULTS

Steady States, Linear Waves, and Stability

Setting all derivatives to zero in (3) and (4) yields steady states when the system is driven by a constant, uniform mean stimulus level ϕ_n . The equations are easily solved numerically, yielding a single low- ϕ_e solution, which corresponds to a normal state.

Small perturbations of steady states allow use of linear analysis. A stimulus $\phi_n(\mathbf{k}, \omega)$ of angular frequency ω and wave vector \mathbf{k} has the transfer function to $\phi_e(\mathbf{k}, \omega)$:

$$\frac{\phi_e(\mathbf{k}, \omega)}{\phi_n(\mathbf{k}, \omega)} = \frac{G_{es}L}{1 - G_{ei}L} \frac{G_{sn}L e^{i\omega t_0/2}}{1 - S_r L^2} \frac{1}{q^2 r_e^2 + k^2 r_e^2}, \quad (6)$$

$$q^2 r_e^2 = (1 - i\omega/\gamma_e)^2 - \frac{L}{1 - G_{ei}L} \left[G_{ee} + \frac{(S_d + S_i)L}{1 - S_r L^2} e^{i\omega t_0} \right], \quad (7)$$

$$G_{ab} = (\bar{\phi}_a/\sigma')(1 - \bar{\phi}_a/Q)v_{ab}, \quad (8)$$

where $L = (1 - i\omega/\alpha)^{-1}(1 - i\omega/\beta)^{-1}$ and $\bar{\phi}_a$ is the steady-state value of ϕ_a . This function is the cortical excitatory response per unit external stimulus, and encapsulates the relative phase via its complex value (Robinson *et al*, 2001; Rennie *et al*, 2002); it is the key to linear properties of the system. The gain G_{ab} is the differential output produced by neurons a per unit input from neurons b , and the static gains for loops in Figure 1 are $S_d = G_{es}G_{se}$ for feedback via relay nuclei only, $S_i = G_{es}G_{sr}G_{re}$ for the loop through reticular and relay nuclei, and $S_r = G_{sr}G_{rs}$ for the intrathalamic loop.

Waves obey the dispersion relation $q^2(\omega) + k^2 = 0$, with instability boundaries where this equation is satisfied for real ω (Robinson *et al*, 1997, 2001). In most circumstances, waves with $k = 0$ (ie spatially uniform) are the most unstable (Robinson *et al*, 1997), and it is found that only the first few (ie lowest frequency) spectral resonances can become unstable. Analysis for realistic parameter ranges finds just four $k = 0$ instabilities, leading to global nonlinear dynamics (Robinson *et al*, 2002): (a) Slow-wave instability ($f \approx 0$) that leads to a low frequency spike-wave limit cycle. (b) Theta instability, which saturates in a nonlinear limit cycle near 3 Hz (see Figure 2(a), where $t_0 = 0.2$ s for clarity, giving a frequency nearer 2 Hz (see below)), with a spike-wave form unless its parameters are close to the instability boundary. (c) Spindle instability at $\omega \approx (\alpha\beta)^{1/2}$ (see Figure 2, in the alpha band for physiological α and β , leading to a limit cycle near 10 Hz. (d) Alpha instability giving a limit cycle near 10 Hz, with a waveform like in Figure 2(b).

The occurrence of only a few instabilities, at low frequencies, enables the state and physical stability of the brain to be parameterized in a 3D space with axes

$$x = G_{ee}/(1 - G_{ei}), \quad (9)$$

$$y = (S_d + S_i)/[(1 - S_r)(1 - G_{ei})], \quad (10)$$

$$z = -S_r\alpha\beta/(\alpha + \beta)^2, \quad (11)$$

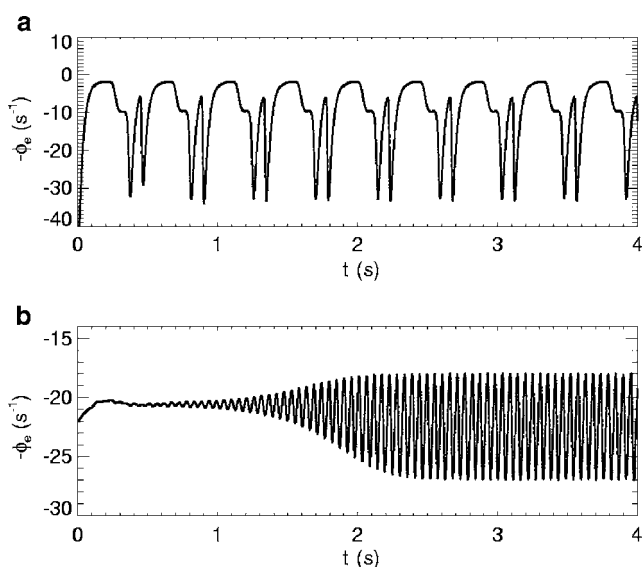


Figure 2 Sample time series from the model in regimes corresponding to (a) theta instability and (b) spindle instability.

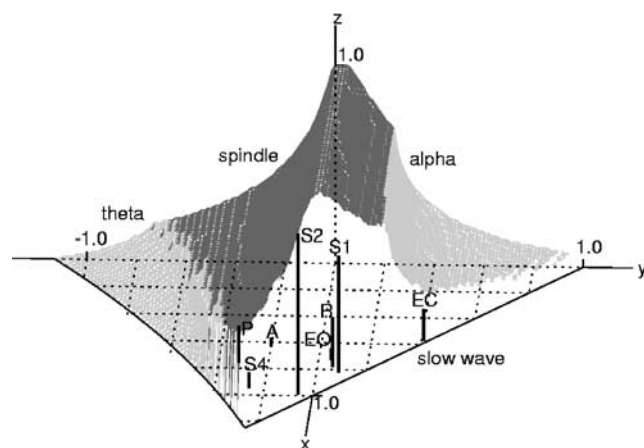


Figure 3 Stability zone for nominal parameters in Table 1, except $\alpha = 60 \text{ s}^{-1}$. The surface is shaded according to instability, as labeled (dark gray = spindle, light gray at right = alpha, light gray at left = theta), with the front right face left transparent as it corresponds to a slow-wave instability. Approximate locations are shown of EO, EC, S1, S2, S4, REM (R), anesthesia (A), and alpha coma (C) states, petit mal onset (P), and the parameters in Table 1 (T), with each state located at the top of its bar, whose x - y coordinates can be read from the grid.

which parameterize cortical, corticothalamic, and thalamic stability, respectively (Robinson *et al*, 2002). In terms of these quantities, the brain occupies a stability zone illustrated in Figure 3. The back is at $x = 0$ and the base at $z = 0$. A pure spindle instability occurs at $z = 1$, which couples to the alpha instability on the upper boundaries, with spindle dominating at top and left, and alpha at right. At small z the left surface is defined by a theta instability. The front right surface corresponds to slow-wave instability and follows the plane $x + y = 1$ to $y = y_c \approx -0.2$. The boundaries correspond to onsets of generalized seizures (Robinson *et al*, 2002).

Spectra, Evoked Potentials, and Coherence

The EEG frequency spectrum is obtained by squaring the modulus of ϕ_e and integrating over

$$P(\omega) = \int |\phi_e(\mathbf{k}, \omega)|^2 d^2\mathbf{k}. \quad (12)$$

Figure 4 shows excellent agreement with observed spectra if it is white noise in space and time, including occurrence of alpha and beta rhythms at frequencies $f \approx 1/t_0$, $2/t_0$, and the asymptotic low- and high-frequency behaviors; key differences between waking and sleep spectra can also be reproduced (see below and Robinson *et al*, 2001). The low-frequency $1/f$ behavior is a signature of edge-of-stability dynamics, which allow complex behavior (Robinson *et al*, 1997, 2001). To test our model and estimate some of its parameters, we fitted its linear spectrum to 103 normal adults' eyes-closed (EC) and eyes-open (EO) spectra (Robinson *et al*, 2002). This yielded mean parameters near those in Table 1.

A 1D wave-number spectrum results if one integrates $|\phi_e(\mathbf{k}, \omega)|^2$ over one component of \mathbf{k} :

$$P(k_x, \omega) = |\phi_e(k_x, k_y, \omega)|^2 dk_y. \quad (13)$$

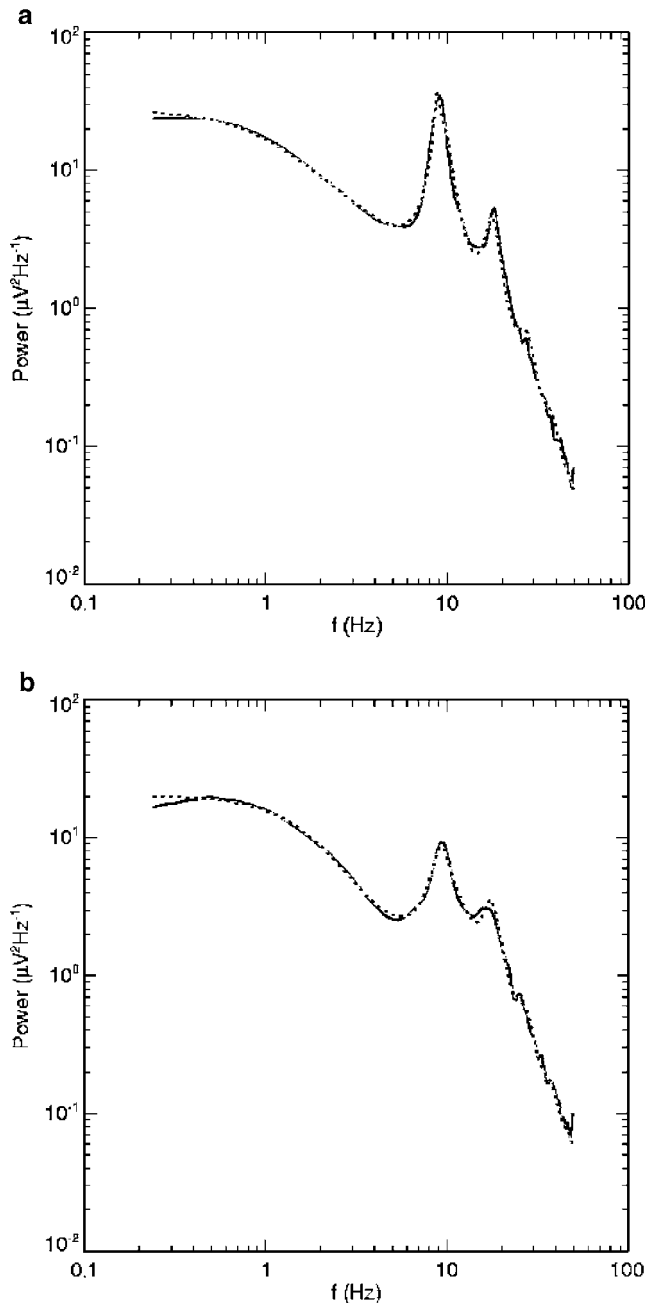


Figure 4 Example spectra (solid) and fits (dashed) from a typical subject in EO and EC states.

We find that this spectrum is flat at small k_x , then approximates a power law, with $P(k_x, \omega) \sim k_x^{-g(\omega)}$. Figure 5 compares the exponent with EC data from Shaw (1991), showing excellent agreement for physiologically realistic parameters, except at $f \sim 5$ Hz, where the data are affected by phase distortions (Shaw 1991). In particular, spectral steepenings at resonances are reproduced.

The inverse Fourier transform of (6) gives the ERP that results from an impulse stimulus. Initial work shows that the result agrees well with the experiment (Rennie *et al*, 2002), as illustrated by the example of a background (as opposed to target, in an oddball paradigm) ERP in Figure 6. Significantly, the model parameters used are essentially the

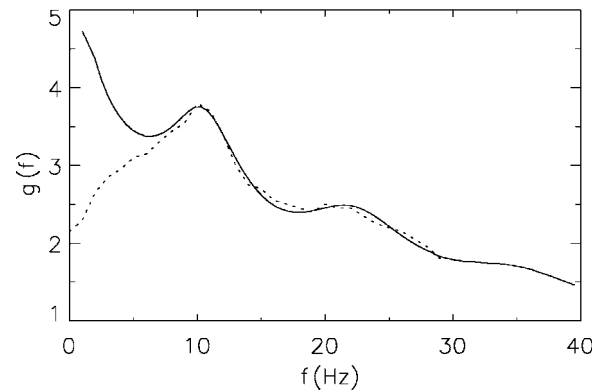


Figure 5 Wave number spectral index g vs frequency. Model results are shown solid and data are dashed.

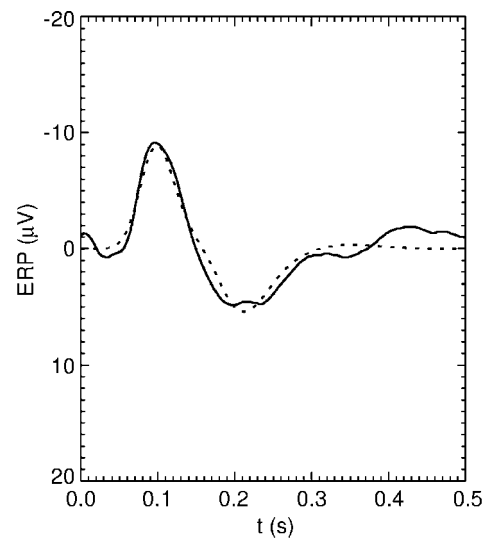


Figure 6 Experimental (solid) and model (dashed) ERPs in response to a stimulus.

same as those that reproduce the same subject's prestimulus EEG spectrum.

The cross spectrum $P(\mathbf{r}, \mathbf{r}', \omega)$ is the phase average of $\phi_e(\mathbf{r}, \omega)\phi_e(\mathbf{r}', \omega)$. The coherence function is then

$$\gamma^2(\mathbf{r}, \mathbf{r}', \omega) = \frac{[P(\mathbf{r}, \mathbf{r}', \omega)]^2}{P(\mathbf{r}, \mathbf{r}, \omega)P(\mathbf{r}', \mathbf{r}', \omega)}. \quad (14)$$

Figure 7 shows that this gives good agreement with observations for model parameters close to those used in obtaining the other plots in this work (Robinson, 2002). A rise seen in γ^2 at large $R = |\mathbf{r} - \mathbf{r}'|$ (Nunez *et al*, 1999) is also reproduced (Robinson, 2002).

States of Arousal

Nonseizure states lie within the stability zone in Figure 3. Detailed arguments regarding the arousal sequence, from alert to deep sleep, and including REM sleep and sleep stages 1–4 (S1–S4), constrain the relevant regions of parameter space and place this sequence as shown in

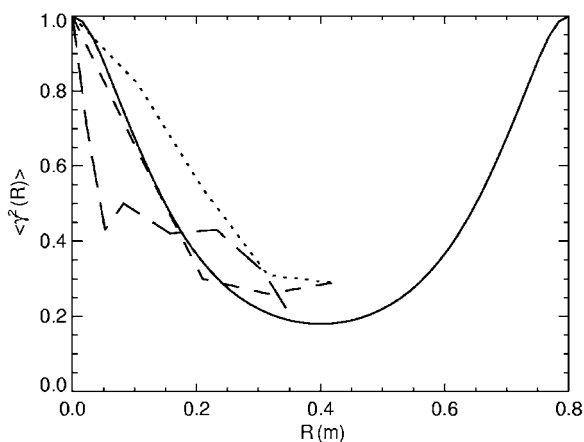


Figure 7 Model alpha-band coherence vs distance (solid) for EC conditions, compared with experimental curves.

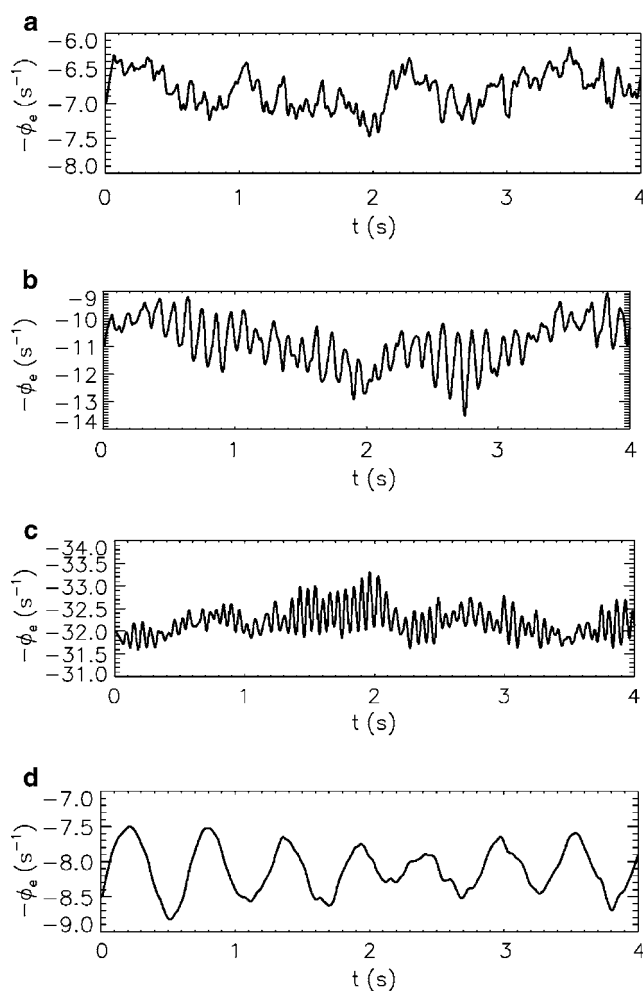


Figure 8 Model time series at labeled points in Figure 3: (a) EO, (b) EC, (c) S2, and (d) S4.

Figure 3 (Robinson *et al*, 2002). States such as anesthesia can also be represented.

Figure 8 shows model time series for parameters illustrating EO, EC, S2, and S4 states, holding Q , γ_e , t_0 , β /

α , v_{ei} and v_{sn} at their nominal values, and varying α and the other v_{ab} only moderately. The features seen strongly resemble those of corresponding experimental data (Niedermeyer and Lopes da Silva, 1999). Known differences between EEG spectra for subjects with differing disorders enable classification of these conditions into different parts of the stability zone, while seizures correspond to departures from this zone, as discussed next.

Petit Mal Seizures

Petit mal is a common generalized epilepsy. Seizures are mostly seen at ages 4–20, last 5–20 s, cause loss of consciousness, and show a spike-wave cycle which starts and stops abruptly across the whole scalp (Niedermeyer and Lopes da Silva, 1999). The frequency falls from around 4 Hz to under 3 Hz in most cases, and non-REM sleep is a powerful seizure activator. Experiments show that the loops in Figure 1 are essential for petit mal, with the cortex synchronizing thalamic activity (Niedermeyer and Lopes da Silva, 1999; Steriade *et al*, 1990). GABA antagonists such as penicillin can start spike-wave oscillations, in some cases converting spindles to spike-wave complexes, similar to those also seen in some partial seizures (Niedermeyer and Lopes da Silva, 1999).

Our model gives an ≈ 3 Hz spike-wave cycle as the nonlinear stage of theta instability (Figure 2) and we conclude that this corresponds to petit mal (Robinson *et al*, 2002). Analysis shows that this cycle consists of a flip-flop (it alternates between two states) in the limit $\gamma_e, \alpha \rightarrow \infty$, a residue of which is seen in Figure 2(a). The high- ϕ_e part corresponds to large ϕ_s incident on the cortex as a result of low ϕ_r a time $t_0/2$ earlier and low ϕ_e a time t_0 earlier; the low- ϕ_e part corresponds to the converse, with near silence in relay nuclei, as seen experimentally. Signals make two circuits of the system before it returns to its original state, giving a period $2t_0$. At finite α , signals traveling via the reticular nucleus are delayed by $\approx 1/\alpha$ more than those that only pass through relay nuclei. Hence, when ϕ_e flips to its upper state, there is a short period $t_0/2$ later when $S_d > |S_i|$, resulting another $t_0/2$ later in a spike of duration $\approx \alpha^{-1}$. Finite α and γ_e also round off the other side of each square wave and finite α leads to damped spindle oscillations at $\omega = (\alpha\beta)^{1/2}$. These mechanisms accord with the experimental inferences above, and observed EEGs often show a residual flip-flop plateau in each cycle (Niedermeyer and Lopes da Silva, 1999; Robinson *et al*, 2002).

Estimation of the petit mal period gives $T \approx 2t_0 + 6/\alpha + 6/\beta + 4/\gamma_e$ (Robinson *et al*, 2002), consistent with observations and the insensitivity of T to most parameters. The main features of the waveform, apart from spindles, are found in cases with β , $\gamma_e = \infty$ but finite α , which implies that the 3D system resulting in that limit contains the essential dynamics. This accords with findings that dimensions of time series of petit mal and related seizures are low (Babloyantz and Destexhe, 1986).

A typical onset point for a petit mal seizure is shown in Figure 3. Transformation of spindles into petit mal is inferred to occur by moving from the vicinity of S2 to the theta instability zone, with a rapid switch of activity from roughly 10 Hz to 3 Hz. Large values of γ_e favor instability,

which may explain the onset of petit mal at around age 4, since γ_e rises in children because of myelination.

DISCUSSION

We have developed a model that incorporates the main features of corticothalamic physiology and anatomy using only 15 parameters. Its predictions provide a unified description of a wide range of phenomena, with six parameters fixed across all states, and the others only varying moderately. Of key importance is the xyz parameter space in which the stability zone of the brain is easily visualized, and in which disorders, states of arousal, etc, can be classified. Within this zone, linear analysis gives good approximations to EEG spectra, ERPs, coherence and correlation functions, and related measures. Zone boundaries are identified with onsets of generalized seizures, consistent with known features of their time series and patterns of occurrence. The model also explains low-dimensional dynamics in petit mal seizures and other nonlinear behaviors such as alpha entrainment and seizure activation are also reproduced (Robinson et al, 2002). A key feature of our approach is that we extract a broad range of behavior from modest changes in the parameters of a single model, without postulating extra mechanisms.

Fitting the model's predictions to data provides a noninvasive probe of large-scale physiology that yields parameter values consistent with independent measures. This enables states of arousal, seizure onsets, and pathologies to be assigned to distinct regions of parameter space. We have found that the normal arousal sequence has a simple form in the xyz space, that clinically observed waking states lie at inferred locations, and that seizure onsets lie close to the most commonly seen precursor states (see also Robinson et al, 2002). This space thus provides a physiologically based organizing framework for a wide variety of phenomena. Its topography may indicate new connections among phenomena in neighboring regions, and enable the significance of the parameters that distinguish the various cases, and cause transitions between them, to be studied systematically.

The approach discussed here provides a powerful framework for further studies: It remains to investigate what factors control progression along inferred arousal sequences, or onset of seizures, for example. This will require inclusion of neuromodulator dynamics and brainstem reticular activation, possibly using additional feedback loops. Spatial variations are also under investigation, with successful initial application to understanding split alpha peaks seen in a few percent of the population (Robinson et al, 2003).

ACKNOWLEDGEMENTS

This work was supported by the University of Sydney's Sesqui Grant Scheme and the Denison Bequest.

REFERENCES

- Babloyantz A, Destexhe A (1986). Low-dimensional chaos in an instance of epilepsy. *Proc Nat Acad Sci USA* **83**: 3513–3517.
- Freeman WJ (1975). *Mass Action in the Nervous System*. Academic: New York.
- Jirsa VK, Haken H (1996). Field theory of electromagnetic brain activity. *Phys Rev Lett* **77**: 960–963.
- Lopes da Silva FH, Hoeks A, Smits H, Zetterberg LH (1974). Model of brain rhythmic activity. The alpha rhythm of the thalamus. *Kybernetik* **15**: 27–37.
- Niedermeyer E, Lopes da Silva FH (1999). *Electroencephalography: Basic Principles, Clinical Applications, and Related Fields*, 4th edn. Williams & Wilkins: Baltimore, MD.
- Nunez PL (1974). Wave-like properties of the alpha rhythm. *IEEE Trans Biomed Eng* **21**: 473–482.
- Nunez PL (1995). *Neocortical Dynamics and Human EEG Rhythms*. Oxford University Press: Oxford.
- Nunez PL, Silberstein RB, Shi Z, Carpenter MR, Srinivasan R, Tucker DM (1999). EEG coherence II. Experimental comparisons of multiple measures. *Clin Neurophysiol* **110**: 469–486.
- Rennie CJ, Robinson PA, Wright JJ (2002). Unified neurophysical model of EEG spectra and evoked potentials. *Biol Cybernet* **86**: 457–471.
- Robinson PA (2003). Neurophysical theory of coherence and correlations of electroencephalographic signals. *J Theor Biol*, in press.
- Robinson PA, Rennie CJ, Rowe DL (2002). Dynamics of large-scale brain activity in normal arousal states and epileptic seizures. *Phys Rev E* **65**, 041924, 1–13.
- Robinson PA, Rennie CJ, Wright JJ (1997). Propagation and stability of waves of electrical activity in the cortex. *Phys Rev E* **56**: 826–840.
- Robinson PA, Rennie CJ, Wright JJ, Bahramali H, Gordon E, Rowe DL (2001). Prediction of electroencephalographic spectra from neurophysiology. *Phys Rev E* **63**: 021903(1–18).
- Robinson PA, Whitehouse RW, Rennie CJ (2003). Nonuniform corticothalamic continuum model of EEG spectra with application to split-alpha peaks. *Phys Rev E*, submitted.
- Shaw GR (1991). *Spherical Harmonic Analysis of the EEG*, Ph.D. thesis, University of Alberta, Alberta, Canada.
- Steriade M, Gloor P, Llinas RR, Lopes da Silva FH, Mesulam M-M (1990). Basic mechanisms of cerebral rhythmic activities. *Electroencephalogr Clin Neurophysiol* **76**: 481–508.
- Wilson HR, Cowan JD (1973). A mathematical theory of the functional dynamics of cortical and thalamic nervous tissue. *Kybernetik* **13**: 55–80.
- Wright JJ, Liley DTJ (1996). Dynamics of the brain at global and microscopic scales: neural networks and the EEG. *Behav Brain Sci* **19**: 285–309.